

Qty 6: 1/2-13x1-1/2 hex bolts, zinc plated grade 8 steel yellow

Qty 2: 1/2-13x1-1/4 hex bolts, zinc plated grade 8 steel yellow

Qty 7: 3/8-16x1-1/4 hex bolts, zinc plated grade 8 steel yellow

Qty 4: 1/2-13 hex nuts, zinc plated grade 8 steel yellow

Qty 7: 3/8-16 hex nuts, zinc plated grade 8 steel yellow

Qty 4: 1/2-13 flange nuts, zinc plated steel

Qty 8: 5/8 flat washers, steel

Qty 18: 1/2 flat washers, steel

Qty 13: 3/8 flat washers, steel

Qty 2: 3/4 grommet, rubber

Qty 3: 1/2 grommet, rubber

Zipties

Electrical tape

Turpentine

Rust-oleum self etching primer

Flat black paint

Rust-oleum truck bed coating

2x6 wood plank cut to 4ft long

Plastic drop cloth

A. Tools

Microfiber towels

Floor jack

2-4 jack stands

Flat head screwdriver

Utility knife

10mm, 12mm, 14mm, 3/4 (qty 2), 1/2 (qty 2) sockets and (qty 2) socket wrenches

Pliers

Socket wrench breaker bar ([one I used](#))

Telescoping magnetic pickup tool ([one I used](#))

Alcohol (I went with bourbon, but beer works too!)

B. Directions

Note: I did this all alone. It would be much easier with 1-2 extra people to assist

Shim plates painting

II. Wipe down shim plates with turpentine on a rag

- III. Wipe down with a dry rag
- IV. Spray with 3 light coats of primer (2 min in-between coats)
- V. After 30 min from last primer coat spray with 3 light coats of flat black paint (2 min in-between coats)
- VI. I waited until the next day to install them

Sliders painting

- VII. Wipe down sliders with turpentine on a rag
- VIII. Wipe down with a dry rag
- IX. Spray with 3 light coats of primer (2 min in-between coats)
- X. After 30 min from last primer coat spray with 3 light coats of bedliner spray (2 min in-between coats)
- XI. I would wait until the next day to install them. Note: these were already painted using the process above by the other TW member that I purchased them from

Driver side installation (takes a lot more time than passenger side, do first)

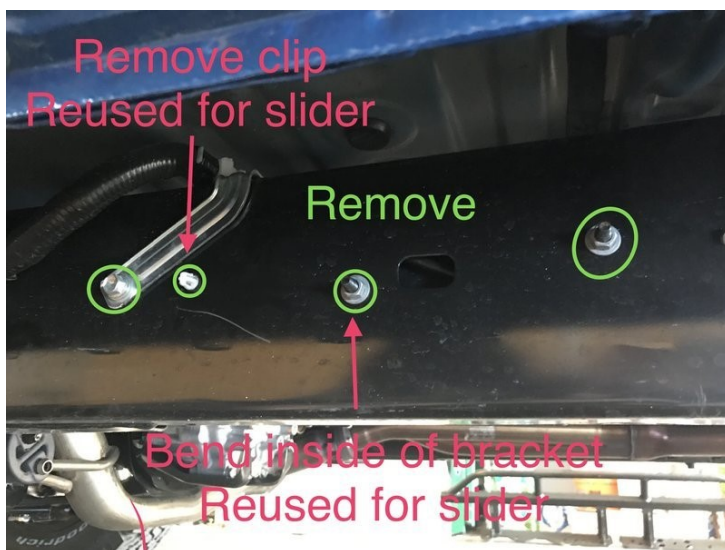
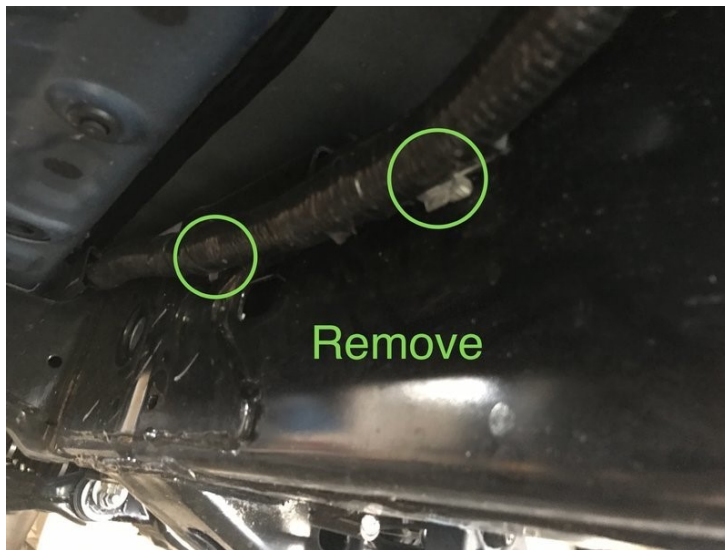
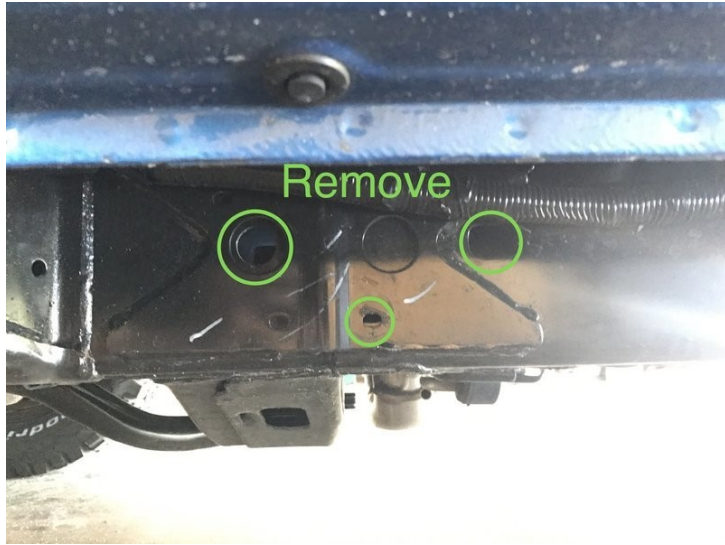
- XII. Remove 3 covers from the front of the frame with a flathead screwdriver (won't use all)
- XIII. For the outside of the frame:
- XIV. Remove the 1x 14mm bolt from the bottom of the frame (may need breaker bar)
- XV. Remove 1x 12mm bolt from the silver bracket
- XVI. Remove the 2x nuts from the black box on the other side and push through
- XVII. Push through the 3x plastic brake clips
- XVIII. Cut the electrical tape from the wire loom and remove the 2x plastic clips by pulling them out
- XIX. For the inside:
- XX. Remove the 1x 12mm bolt for the brake lines in the front of the frame
- XXI. Remove the 2x front plastic brake clips completely (will reuse these holes for the slider)
- XXII. For the black box, bend the lower right screw mount 90deg or remove completely (will reuse this hole for the slider)
- XXIII. Jack up the slider using the 2x6 and secure with jack stands
- XXIV. Install the following bolts (#'s correlate to pictures) and keep everything very loose until you get all the bolts in
- XXV. #1 (use shim plate, also use magnetic tool to hold the flange nut inside the frame while you thread in the bolt from the outside - this is the most difficult part of the slider installation)
- XXVI. Outside frame: 1/2x1-1/2 bolt, 1/2 washer, 5/8 washer
- XXVII. Inside frame: 1/2 flange nut
- XXVIII. #2 (use shim plate)
- XXIX. Outside frame: 1/2x1-1/2 bolt, 1/2 washer, 5/8 washer
- XXX. Inside frame: 1/2 flange nut
- XXXI. #3
- XXXII. Outside frame: 3/8 nut, 3/8 washer, 1/2 washer

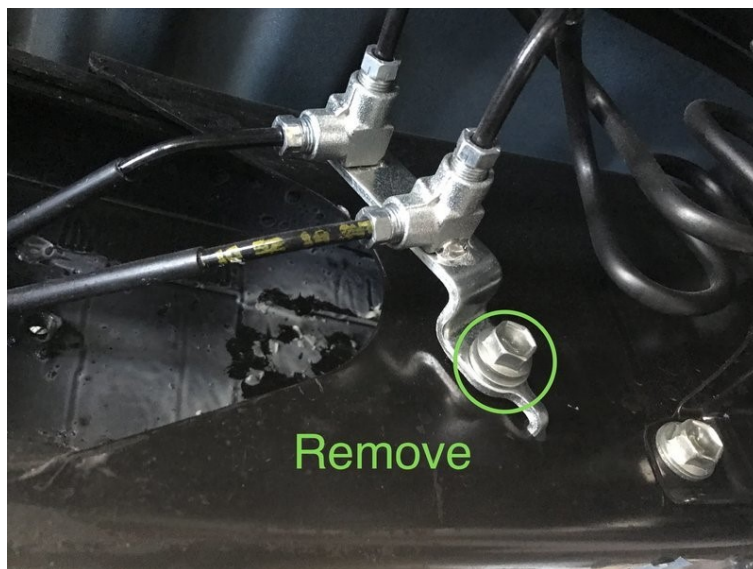
- XXXIII. Inside frame: 3/8x1-1/4 bolt, 3/8 washer, 1/2 grommet
- XXXIV. #4
- XXXV. Outside frame: 3/8 nut, 3/8 washer
- XXXVI. Inside frame: 3/8x1-1/4 bolt, 3/8 washer, 1/2 grommet
- XXXVII. #5
- XXXVIII. Outside frame: 3/8 nut, 3/8 washer, 1/2 washer
- XXXIX. Inside frame: 3/8x1-1/4 bolt, 3/8 washer, 1/2 grommet
- XL. #6
- XLI. Outside frame: 14mm stock bolt
- XLII. Inside frame: none
- XLIII. #7
- XLIV. Outside frame: 1/2 nut, 1/2 washer, 5/8 washer
- XLV. Inside frame: 1/2x1-1/4 bolt, 1/2 washer, 3/4 grommet
- XLVI. #8
- XLVII. Outside frame: 1/2 nut, 1/2 washer, 5/8 washer
- XLVIII. Inside frame: 1/2x1-1/4 bolt, 1/2 washer
- XLIX. Remove jack and jack stands and then tighten all the bolts down
- L. Cut 3/4 grommet into 6x 1/2in pieces, add two grommet pieces to each side of the brake lines where they go over the perpendicular frame support and then add a zip tie to each side, add two grommet pieces between the brake lines themselves to the left of the black box, add a zip tie to the brake lines to the right of the black box
- LI. Push back plastic brake clip back through, reinstall front brake line bolt, reinstall nut for black box, reinstall bolt for silver bracket, reinstall two plastic wire loom brackets and redo electrical tape to hold wire loom to brackets

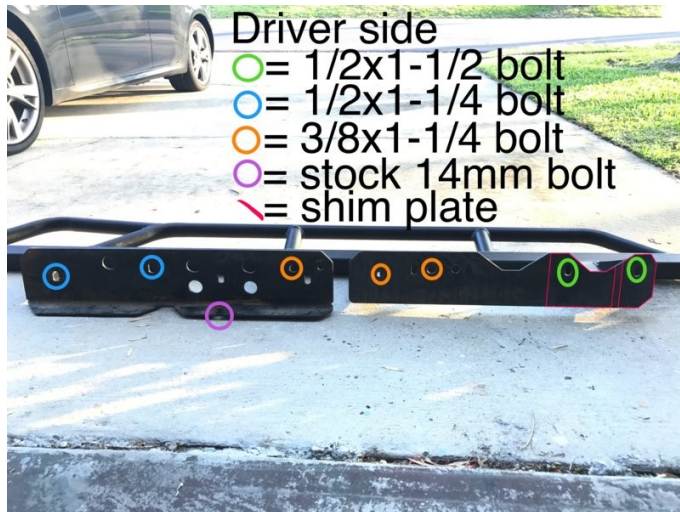
Passenger side installation

- LII. Remove 5 covers from the front of the frame with a flathead screwdriver (won't use all)
- LIII. For the outside of the frame:
- LIV. Remove the 1x 14mm bolt from the bottom of the frame (may need breaker bar)
- LV. Remove 2x 10mm bolt from black box and remove cover
- LVI. Remove 2x 12mm bolt from bracket under black cover and pull up from frame
- LVII. Jack up the slider using the 2x6 and secure with jack stands
- LVIII. Install the following bolts (#'s correlate to pictures) and keep everything very loose until you get all the bolts in
- LIX. #1 (use shim plate, much easier than driver side and no brake lines in the way)
- LX. Outside frame: 1/2x1-1/2 bolt, 1/2 washer, 5/8 washer
- LXI. Inside frame: 1/2 flange nut
- LXII. #2 (use shim plate)

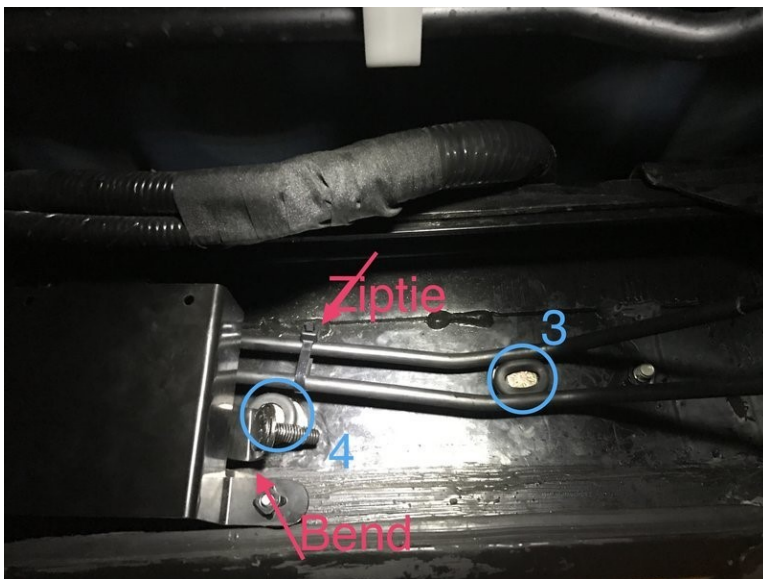
- LXIII. Outside frame: 1/2x1-1/2 bolt, 1/2 washer, 5/8 washer
- LXIV. Inside frame: 1/2 flange nut
- LXV. #3
- LXVI. Outside frame: 3/8 nut
- LXVII. Inside frame: 3/8x1-1/4 bolt, 3/8 washer, 1/2 washer
- LXVIII. #4
- LXIX. Outside frame: 3/8 nut, 3/8 washer, 1/2 washer
- LXX. Inside frame: 3/8x1-1/4 bolt, 3/8 washer
- LXXI. #5
- LXXII. Outside frame: 3/8 nut, 3/8 washer, 1/2 washer
- LXXIII. Inside frame: 3/8x1-1/4 bolt, 3/8 washer
- LXXIV. #6
- LXXV. Outside frame: 14mm stock bolt
- LXXVI. Inside frame: none
- LXXVII. #7
- LXXVIII. Outside frame: 1/2 nut, 1/2 washer
- LXXIX. Inside frame: 1/2x1-1/2 bolt, 1/2 washer, 5/8 washer
- LXXX. #8
- LXXXI. Outside frame: 3/8 nut, 3/8 washer, 1/2 washer
- LXXXII. Inside frame: 3/8x1-1/4 bolt, 3/8 washer
- LXXXIII. #9
- LXXXIV. Outside frame: 1/2 nut, 1/2 washer
- LXXXV. Inside frame: 1/2x1-1/2 bolt, 1/2 washer, 5/8 washer
- LXXXVI. Remove jack and jack stands and then tighten all the bolts down
- LXXXVII. Reinstall bolts for bracket, reinstall bolts for bracket cover
 - A. Sliders
 - B. Driver side

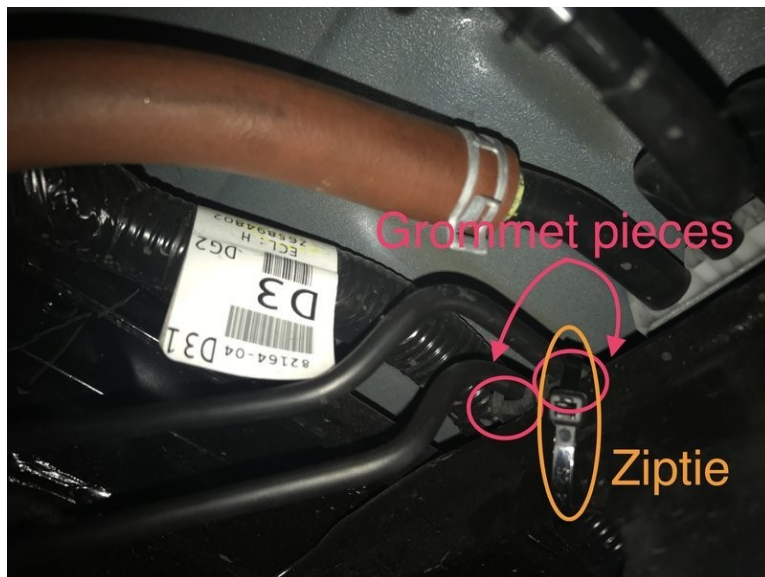
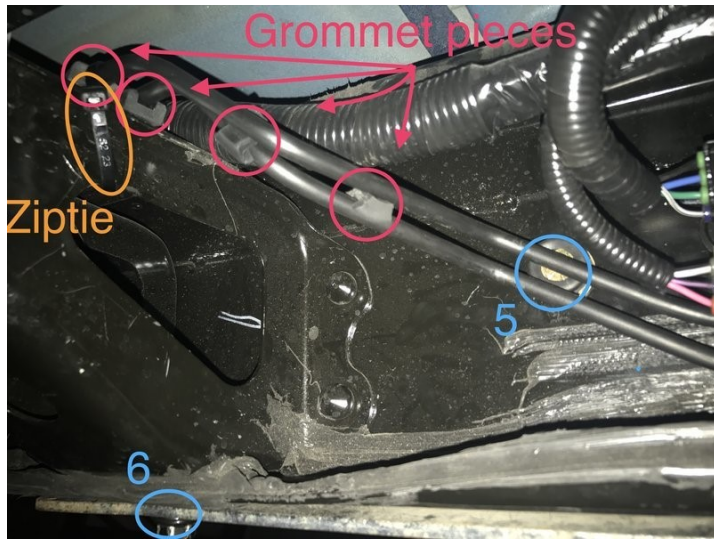












Passenger side

