



T3 2016+ Tacoma

Front Bumper Installation Instructions

Important Disclaimer:

Thank you for purchasing this CBI product. Please read through this entire document before proceeding with installation. **BE AWARE:** you will have to make body modifications to fit this bumper, if you are not confident in your mechanical skills, please seek the help of a professional to perform the installation. Check your packages immediately upon arrival to ensure that everything listed is included, and to check for damage during shipping. If anything is missing or damaged, or if you need technical assistance with any aspect of this installation, call CBI at (208) 528-0664 as soon as possible.

Hardware:

- (2) –7/16" X 4" grade 8 bolts
- (4) –7/16" X 1" Grade 8 bolts
- (6) –7/16" serrated flange nuts
- (6) –7/16" SAE Washers
- (2) –½" X 1 ½" Grade 8 bolts
- (2) –½" serrated flange nuts
- (2) –½" SAE washers
- (2) –½" Strut washers zinc
- (6) –Black strut washers
- (2) –Side support brackets License Plate Hardware:
- (2) –¼" X ½" S.S. button head bolts
- (2) –¼" serrated flange nuts Fog Lights:
- (4) –¼" X ½" S.S. button head bolts
- (4) –¼" serrated flange nuts

- (2) –5/16" X ¾" hex head bolts
- (2) –5/16" SAE washers
- (2) –5/16" serrated flange nuts
- (2) –fog light brackets (left and right specific) Power Steering Cooler Relocation Brackets:
- (2) –¼" X ¾" hex head bolts
- (2) –¼" SAE washers
- (2) –¼" serrated flange nuts
- (2) –Power Steering Cooler brackets Winch Plate:
- (6) –3/8" X ¾" S.S. button head bolts
- (6) –3/8" serrated flange nuts

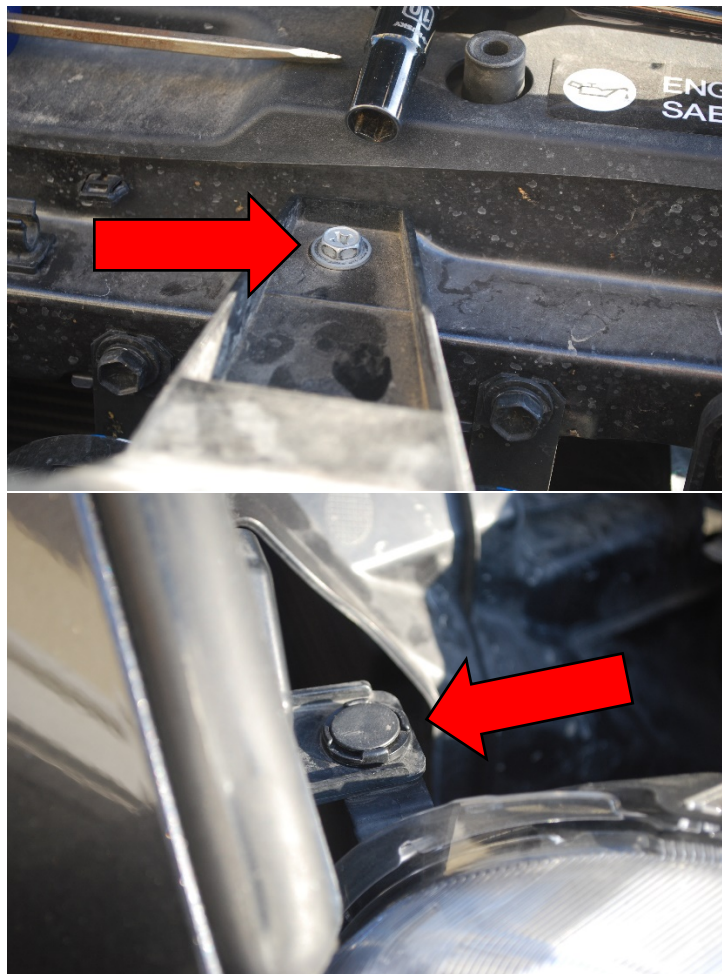


Important Information:

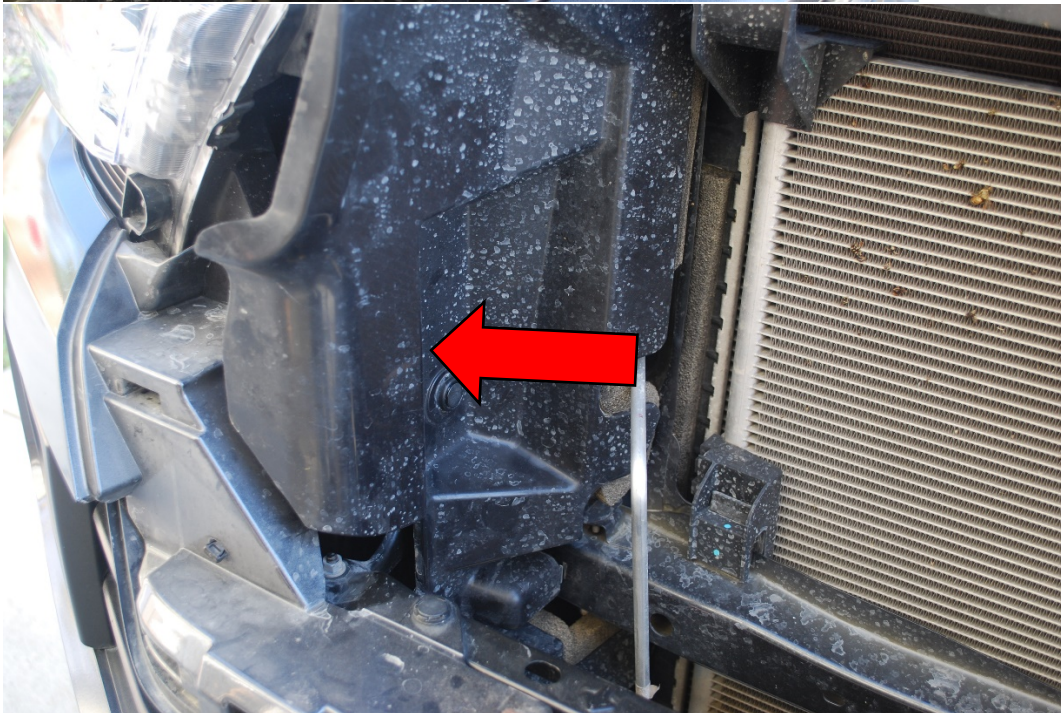
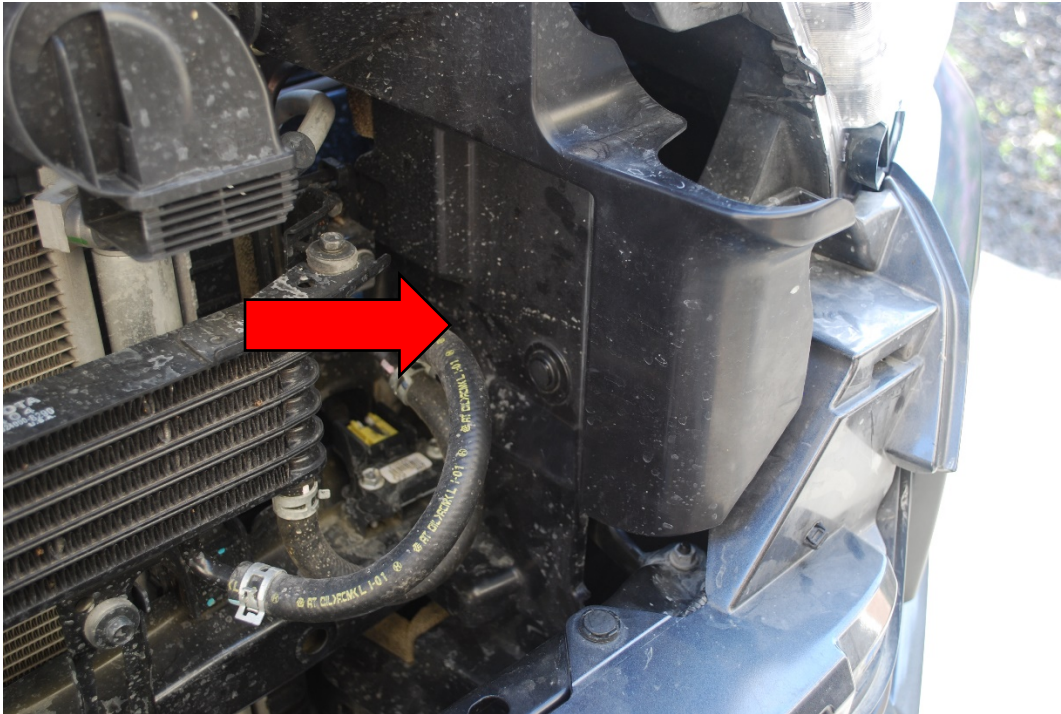
If your CBI product comes as unpainted, bare steel or aluminum. You will want to either powder coat or paint prior to final installation, however it is very important to PRE-INSTALL the unpainted product first, following these instructions, BEFORE painting or powder coating any of the components! This will ensure that all parts are correct and any incidental trimming or drilling will have been done prior to coating. Also, it will give you a practice run to familiarize yourself with the process, to lessen the likelihood of damaging the finish during final installation. CBI Off Road is NOT RESPONSIBLE for paint or powder coating costs, damage to paint or powder coating, or costs associated with inadvertently painting or powder coating components that are defective or were shipped or assembled in error. It is the customer's responsibility to pre-install and verify that all parts are correct prior to paint or powder coat

1. Removing and cutting factory plastic bumper

- Remove Front Grill (2 push tabs & (2) 10mm bolts)



2. Remove Side Splash Guards Behind Grill Area (2 push tabs) some minor trimming will be needed once new bumper is fitted.

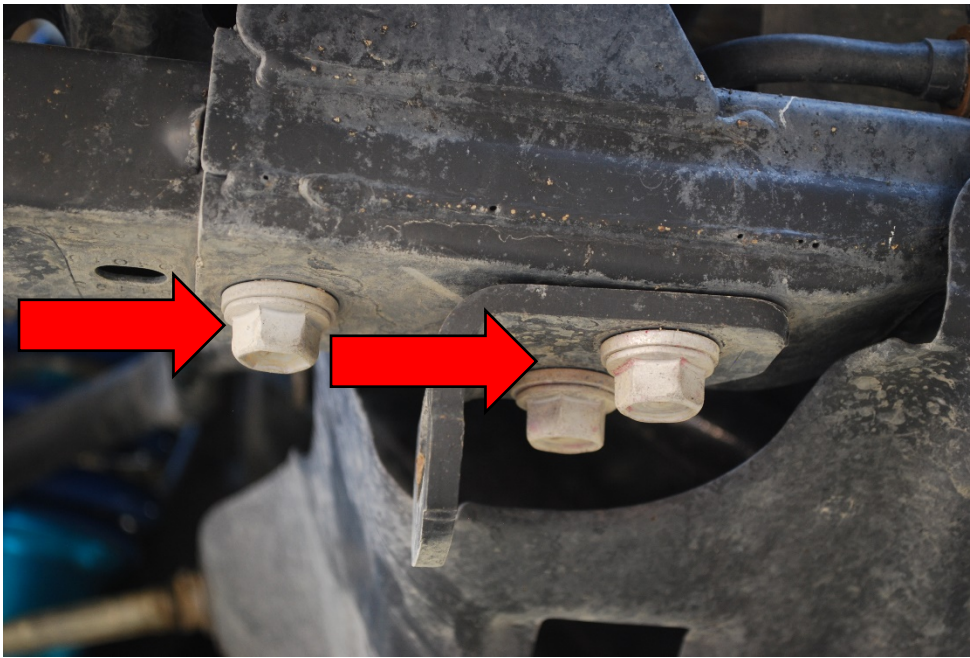


3. Remove Fender Flares (**Note:** these are bushwacker fender flares which are slightly different from the oem flares which have plastic clips on the backside. You have two options at this point: remove the flares and cut separately as shown here OR leave flares on and cut with the bumper).

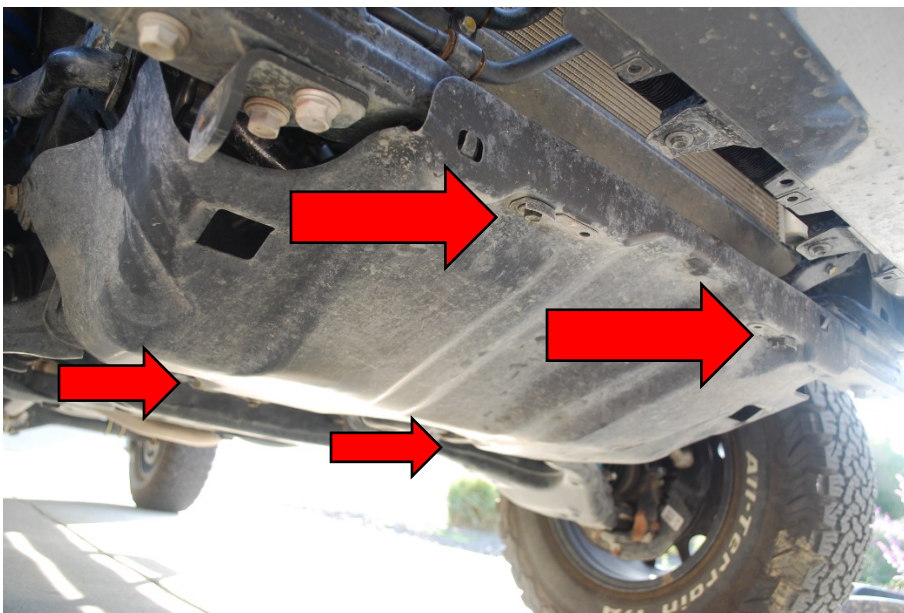
Remove 10mm bolts from fender flares inside the wheel well area (oem flares will have double sided tape and plastic snaps on the back side so be cautious when pulling oem flares off)



4. Remove 10mm bolts from the underside of the front bumper (this will vary depending on if you have the oem wind deflector still on etc.) otherwise you should have 4-6 bolts to remove.
5. Remove 17mm bolts from oem tow hook assembly and crossmember ends



6. Remove (4) 12mm bolts holding the oem skid plate in place as this will allow better access for mounting (**Note**: If you are not replacing the oem skid plate with an aftermarket skid plate it is highly recommended to trim the front lip off to allow easy removal of the skid plate without having to remove the whole bumper each time)



7. **Optional:** Remove fog light covers by pressing down on backside tabs and pulling outward. (disconnect the fog lights from the harness to allow removal of the lower portion of the bumper which will be cut off). This will give you more room and better visual aid when cutting the bumper.

Note: These installation guidelines are for cutting the bumper while still attached to the vehicle. If you are planning on removing the entire bumper for cutting these directions will be slightly different.

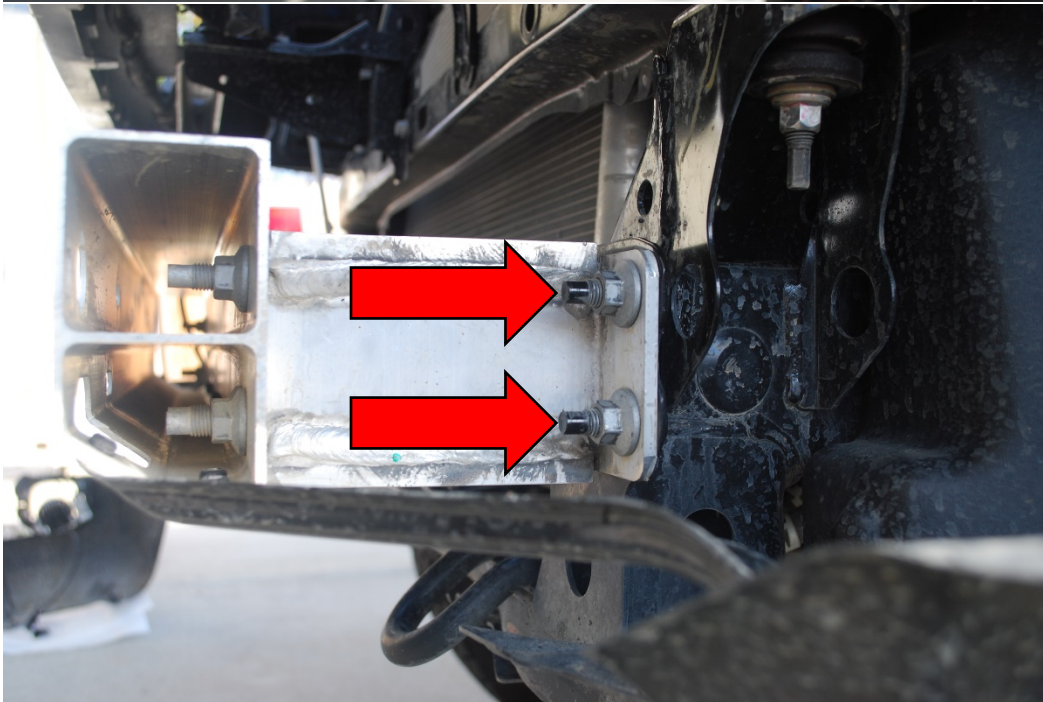
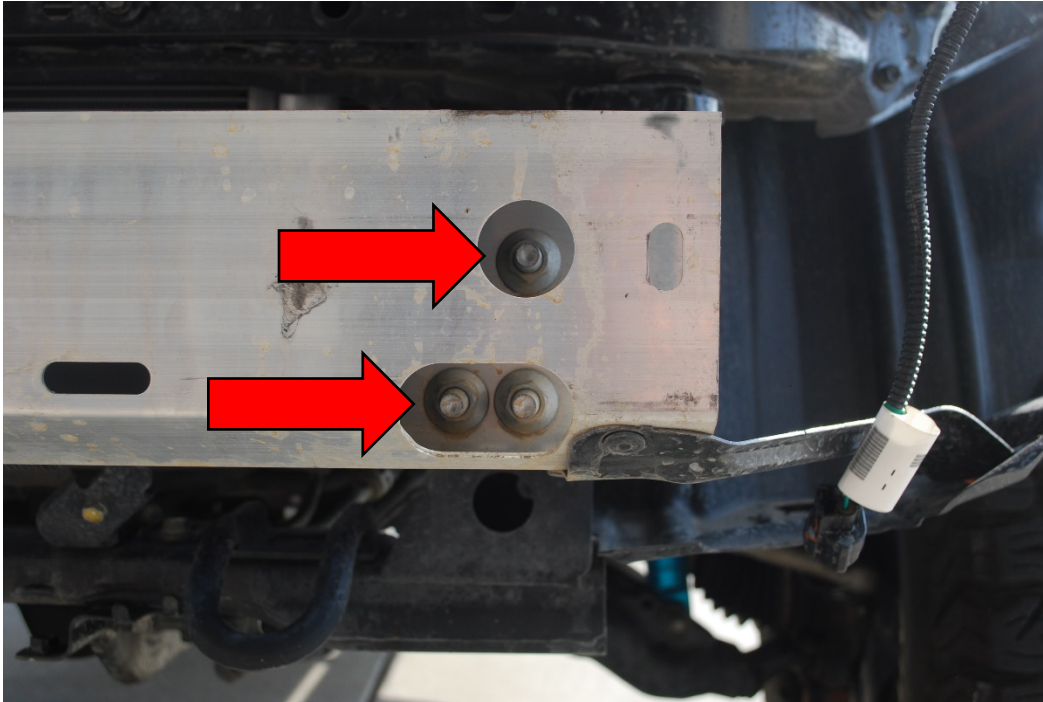


8. Prep the front bumper with painters tape to allow a good visual aid for cutting your straight line. Mask the face of the bumper as shown in photos starting at the fog lights. Line up the tape with the edge of the opening holding a straight line around the corner and a 1/4" above the point on the bumper at the fender well. (optional: In this installation we chose to cut a little bit lower to ensure we had room for error by leaving some extra to trim off once the bumper was test fitted)

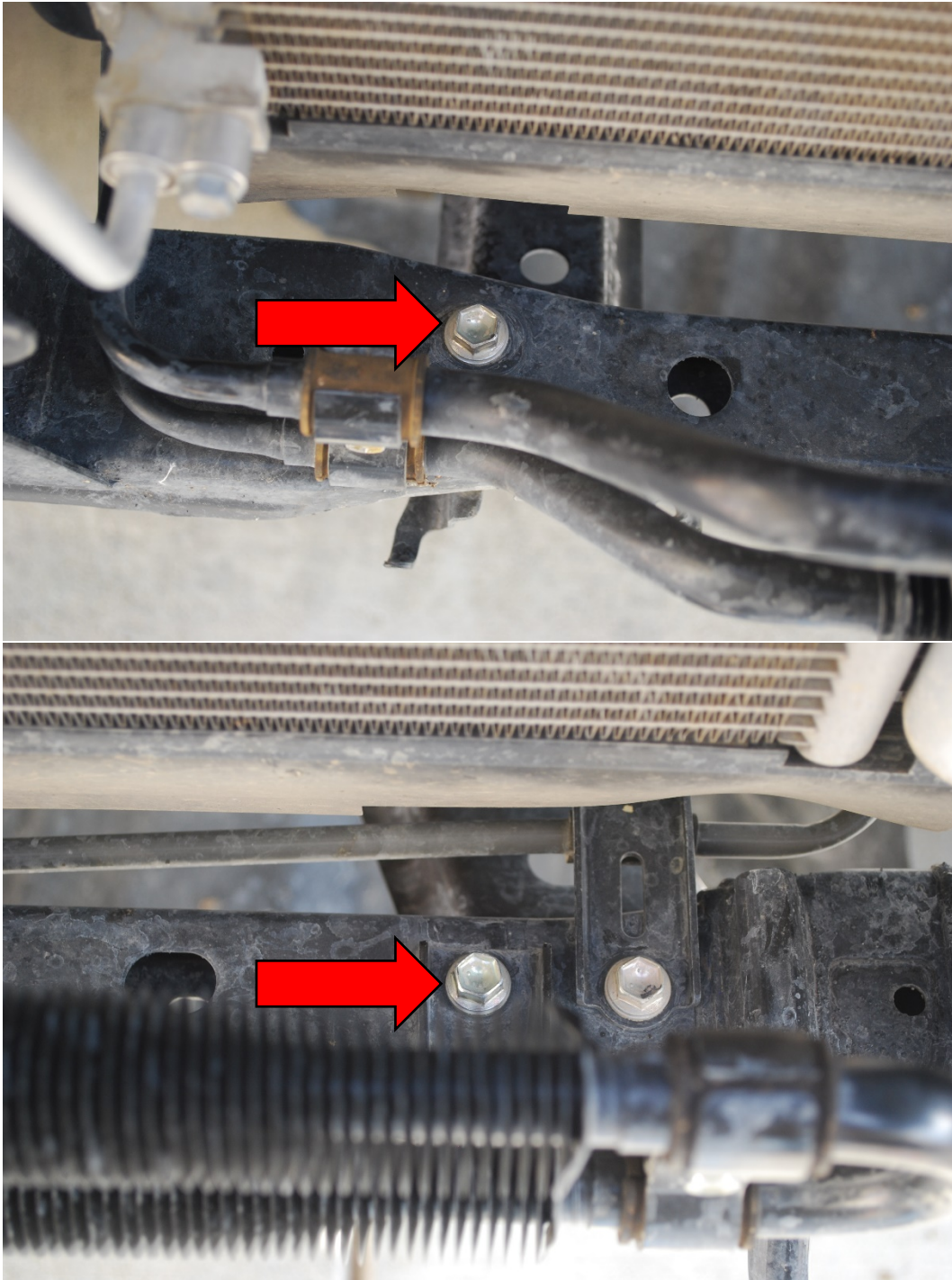


9. Once both sides have been cut, remove lower portion of bumper which has just been cut.

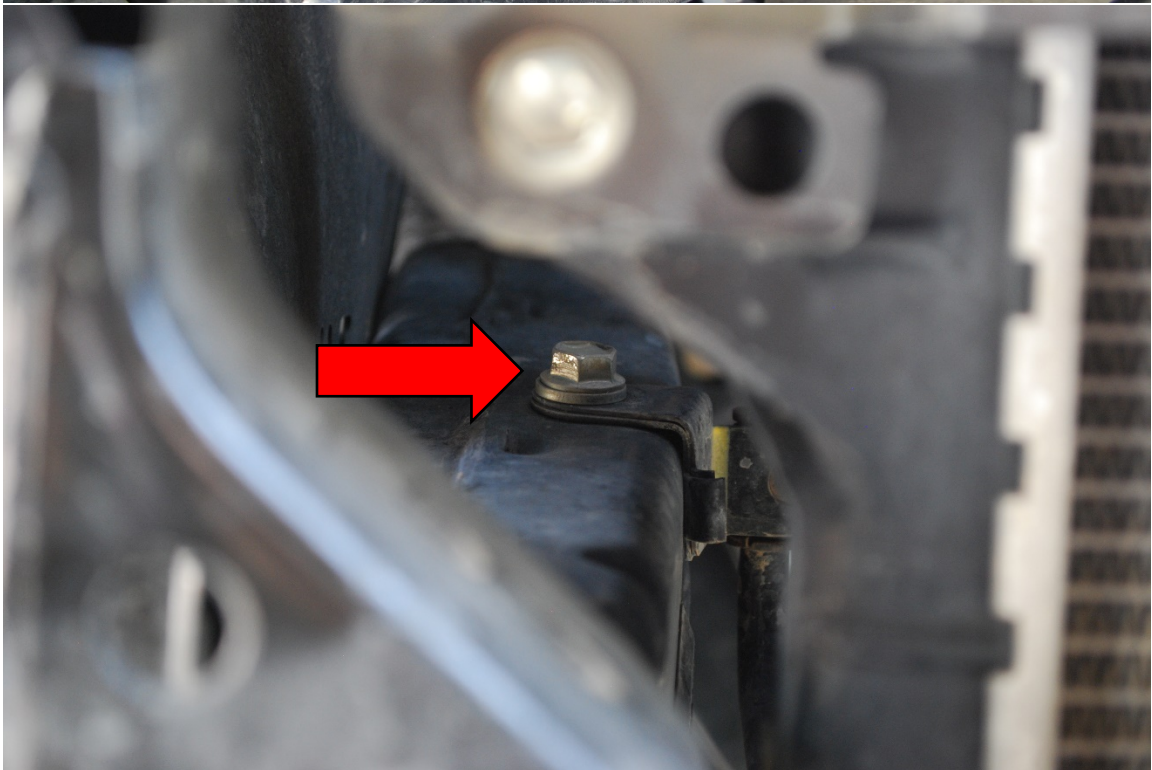
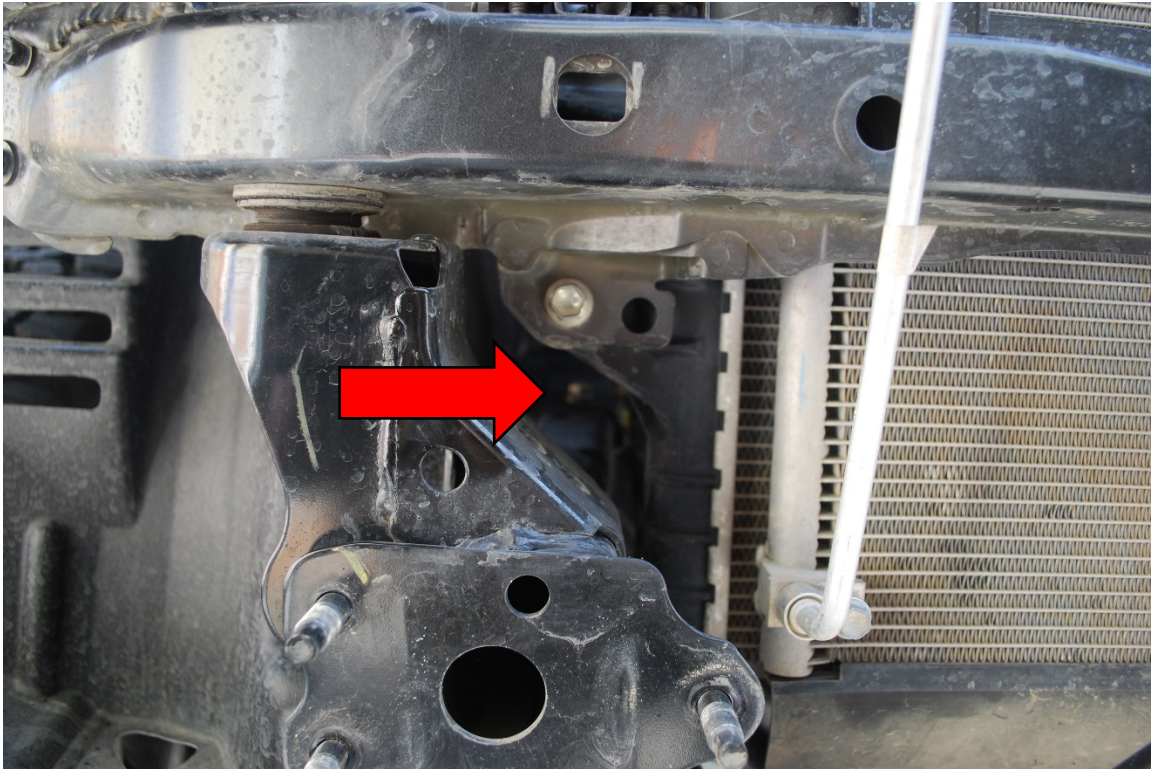
10. Remove front crash bar plastic bumper guard and front beam by removing (3) 14mm nuts on each side. This will expose the back side (3) 14mm nuts in which you will remove the crash bar towers. **IMPORTANT**: save the (3) 14mm nuts as they will be reused for the new T3 Bumper Installation.



11. With the power steering cooler accessible, remove the (2) 12mm bolts from the oem brackets (save bolts as they will be re used for re mounting).

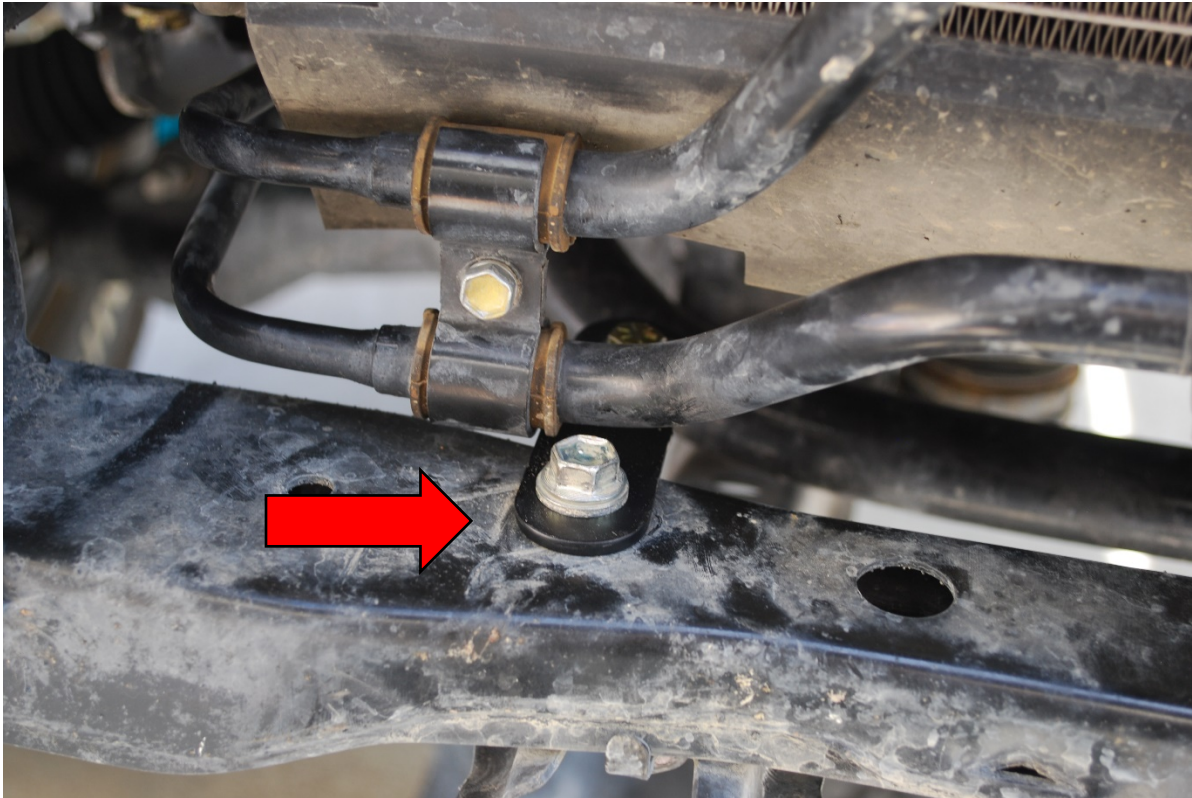


12. With the power steering cooler free you will need to remove the power steering lines bracket bolt located on the passenger side wheel well behind the splash guard.



13. With the cooler completely free you can take the supplied cooler relocation bracket hardware and relocate the power steering cooler. Re use the original bolt for the front of the bracket and the new nut, bolt and washer combo for the rear mounting location.



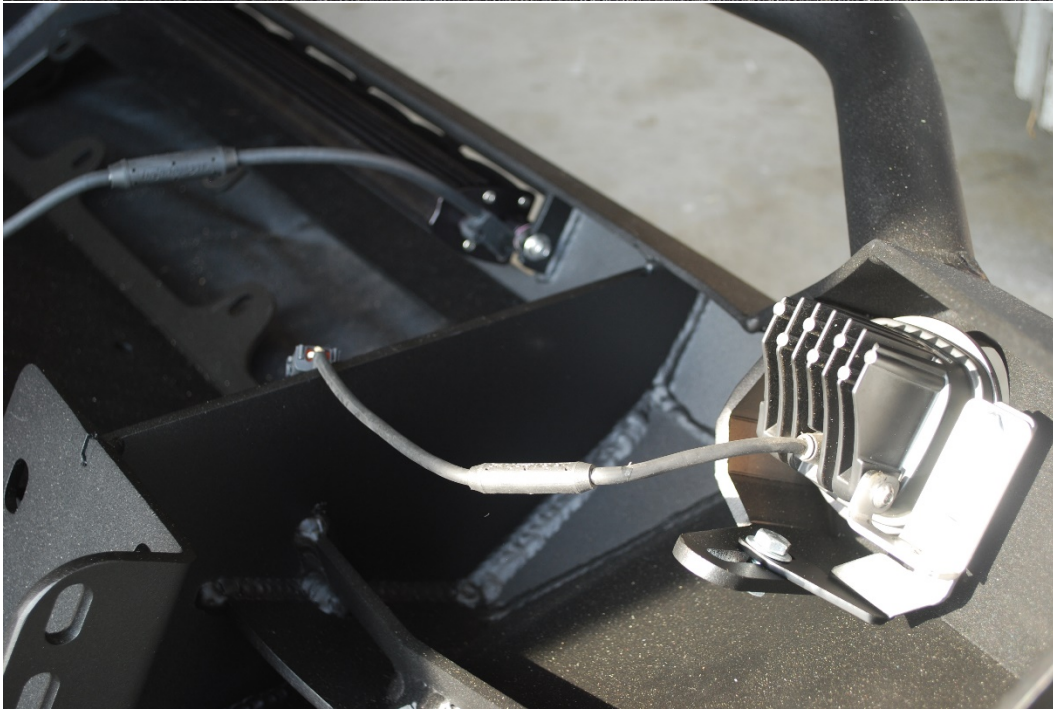


You are now prepped for the installation of your new T3 Front Bumper!



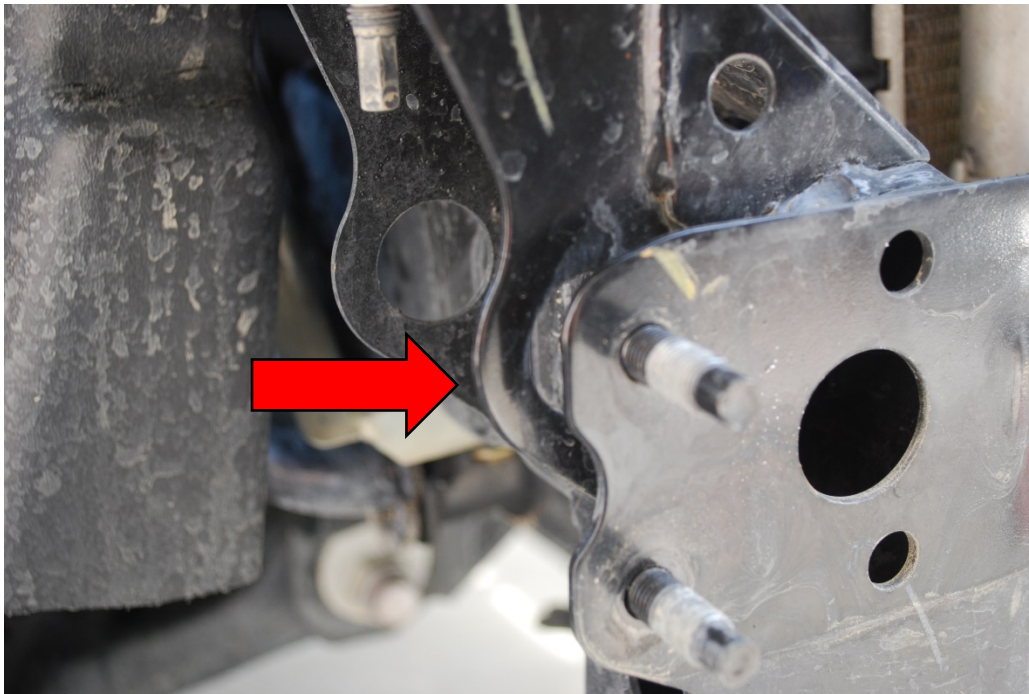


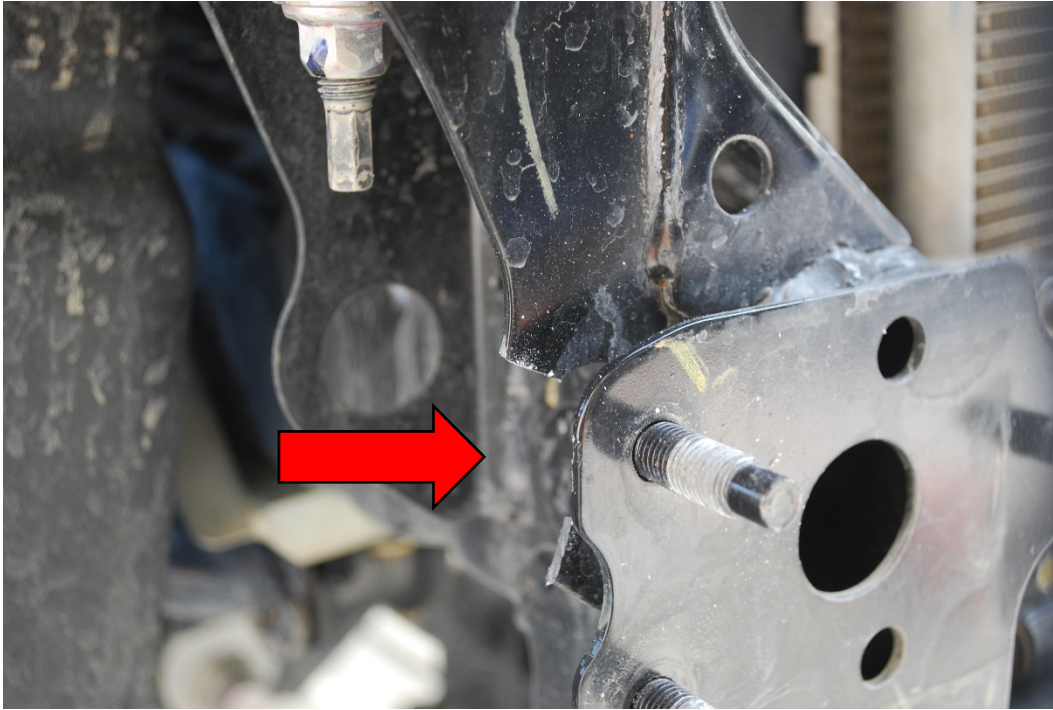
14. Install your optional winch, lightbar and fog lights with the supplied hardware





15. Before mounting the bumper you will have to bend or notch the area marked below to allow the new bumper bracket to sit flush with the bumper brace. (**Note:** Ensure after any cuts to paint the exposed metal to prevent any future rust issues)





16. Ensure to have a helping hand to aid in lining up the bumper. Tape off the top portion of the bumper ends to avoid any scratches/rubbing when initially fitting the bumper for the first time. (**NOTE**: if you have a hoop T3 style bumper ensure the grill is re installed prior to installing the bumper as you will not have room in between the hoop and the grill area to install the grill after the bumper has been mounted)



17. Place the bumper onto the 3 preexisting bolts from the oem crash bar. While in place use the oem nuts from earlier removal, along with the newly supplied washers and hand tighten them for now to allow minor fitment adjustments. You will ultimately want around $\frac{1}{4}$ " + gap between the bumper and your cut bumper area to allow for any front bumper flex that may occur.



18. Make any additional trimming/adjustments to ensure you have everything lined up perfectly.





19. Next is installation of the side support brackets. **IMPORTANT:** There are two styles of brackets so make sure prior to your order that you verify with CBI whether you have external reservoirs or not as this will make a difference in which brackets you will receive (highly recommend that if you plan on getting external reservoirs in the future to order the brackets with the external reservoir brackets to save time and money down the road).

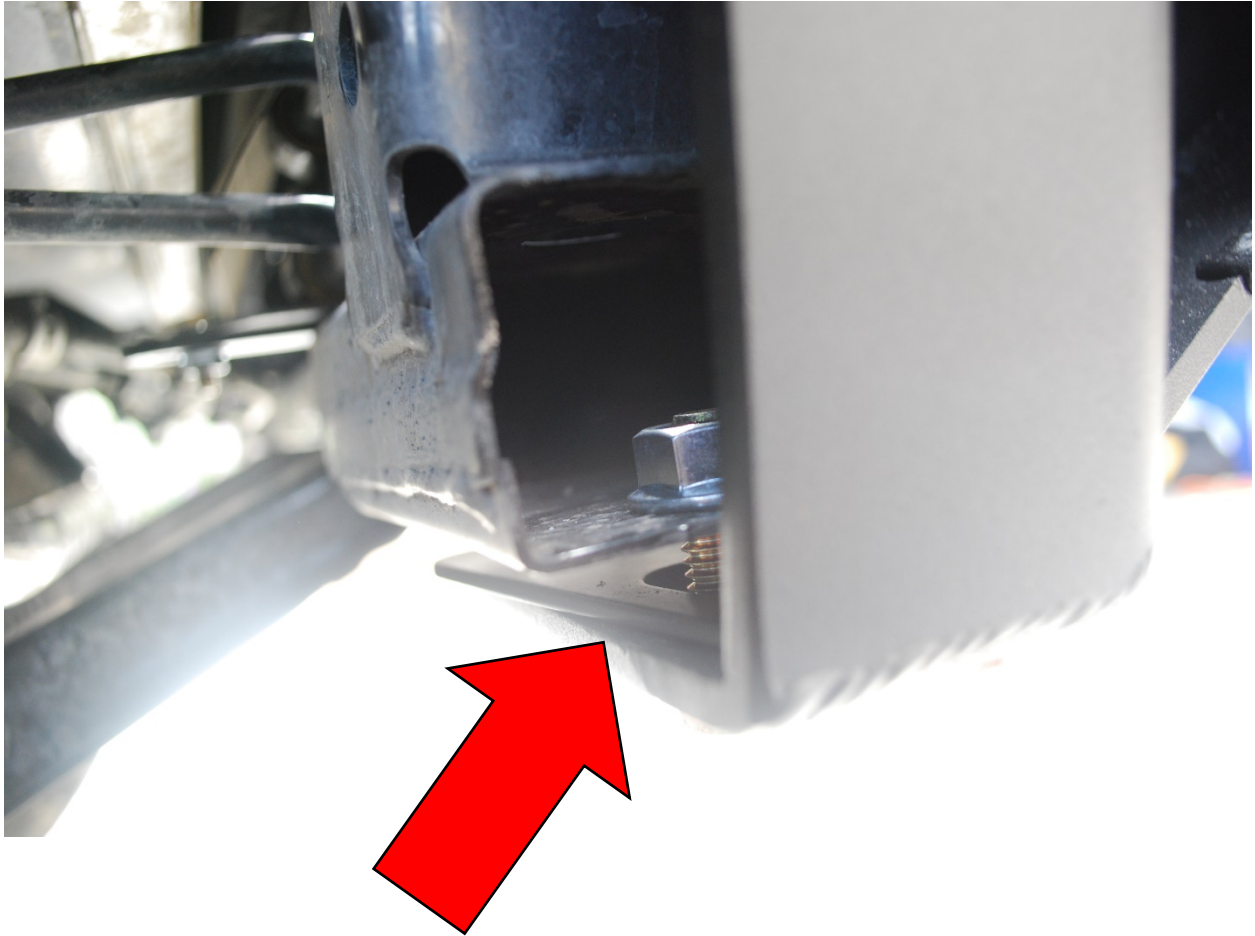
Remove (2) 12mm bolts from front sway bar brackets (**Note:** in this build the front sway bar was fully removed which is not recommended for on street use). Otherwise place new bracket between the frame and the sway bar bracket.



20. With the lower two bolts that were just removed from the sway bar mounts, re use along with newly supplied washers and mount the new side support bracket using the newly supplied hardware (7/16" x 4" long grade 8 bolt, round washer, nut and square zinc plated washer)



21. With everything hand tight, make final adjustments and place the last spacer, bolt, washer and nut combination on the bottom portion of the new front bumper on each side.



22. Go back and tightened down every nut and bolt starting from the bottom up. (Note: this would be the time for optional Loctite/thread lock) Also recommended is paint marking each nut and bolt to give a visual aid on whether or not bolts become loose or start backing out.



23. You are now officially part of the CBI Offroad Fabrication Family! Enjoy your new CBI T3 front bumper on your 2016+ Toyota Tacoma and we'll see you on the trails!



For Questions or Further Installation Help:

Call: 866-522-0697 / 208-528-0664

Email: info@cbioffroadfab.com

